

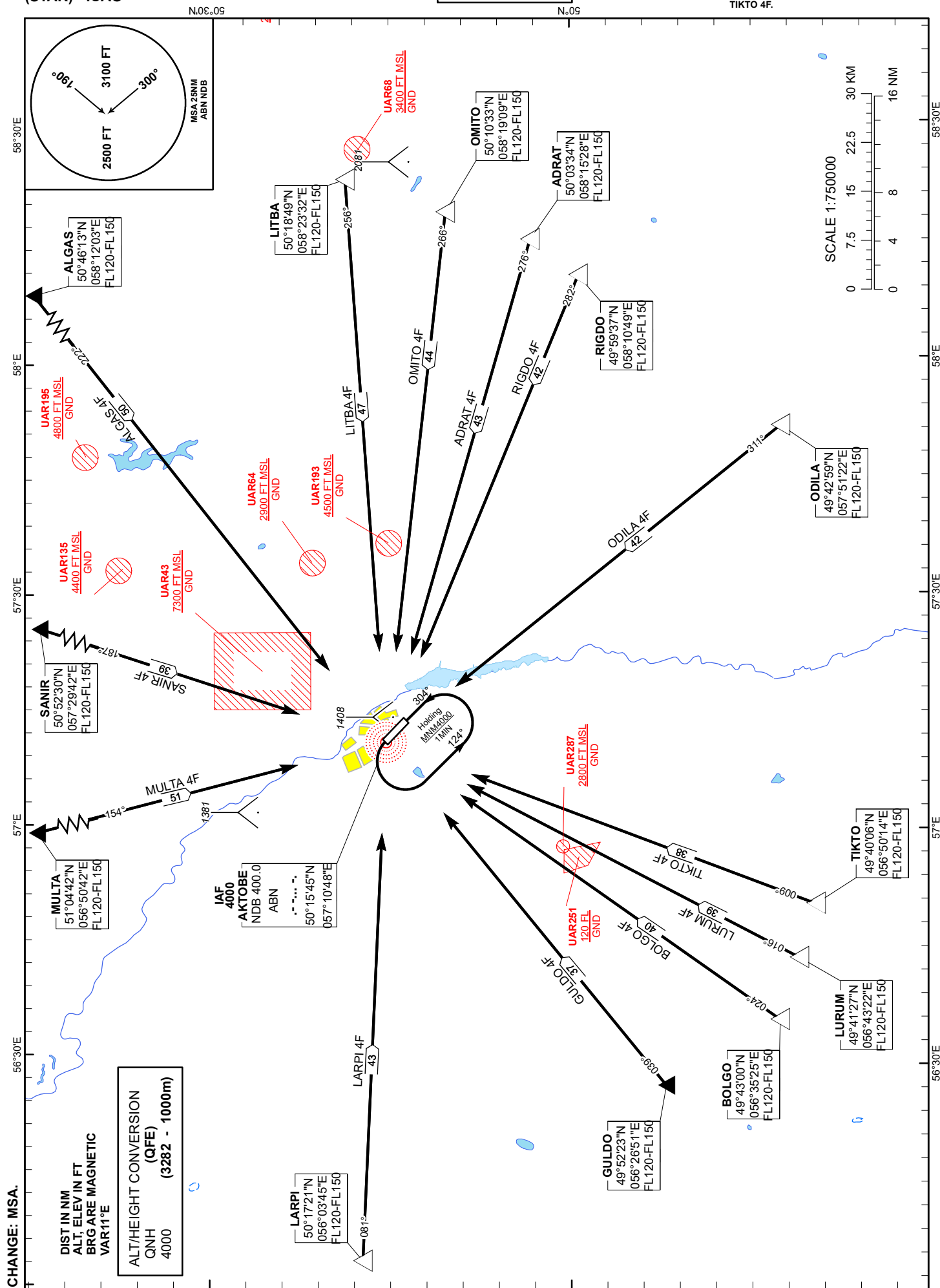
STANDARD ARRIVAL
CHART - INSTRUMENT
(STAR) - ICAO

TRANSITION ALTITUDE
10000 FT

AKTOBE TOWER 120.90
AKTOBE ATIS (EN) 126.0
AKTOBE ATIS (RU) 127.80

AD RAT 4F, AL GAS 4F, BOL GO 4F,
GUL DO 4F, LAR PI 4F, LIT BA 4F,
LUR UM 4F, MULT A 4F, ODILA 4F,
OMITO 4F, RIG DO 4F, SANIR 4F,
TIK TO 4F.

AKTOBE
RWY 12



STANDARD ARRIVAL ROUTES – INSTRUMENT (STAR) AKTOBE RWY 12
MULTA 4F After crossing MULTA (N510442 E0565042), proceed on track 154° to NDB ABN. Cross NDB ABN at 4000 FT. Cross MULTA at FL120-FL150
SANIR 4F After crossing SANIR (N505230 E0572942), proceed on track 187° to NDB ABN. Cross NDB ABN at 4000 FT. Cross SANIR at FL120-FL150
ALGAS 4F After crossing ALGAS (N504613 E0581203), proceed on track 222° to NDB ABN. Cross NDB ABN at 4000 FT. Cross ALGAS at FL120-FL150
LITBA 4F After crossing LITBA (N501849 E0582332), proceed on track 256° to NDB ABN. Cross NDB ABN at 4000 FT. Cross LITBA at FL120-FL150
OMITO 4F After crossing OMITO (N501033 E0581909), proceed on track 266° to NDB ABN. Cross NDB ABN at 4000 FT. Cross OMITO at FL120-FL150
ADRAT 4F After crossing ADRAT (N500334 E0581528), proceed on track 276° to NDB ABN. Cross NDB ABN at 4000 FT. Cross ADRAT at FL120-FL150
RIGDO 4F After crossing RIGDO (N495937 E0581049), proceed on track 282° to NDB ABN. Cross NDB ABN at 4000 FT. Cross RIGDO at FL120-FL150
ODILA 4F After crossing ODILA (N494259 E0575122), proceed on track 311° to NDB ABN. Cross NDB ABN at 4000 FT. Cross ODILA at FL120-FL150
TIKTO 4F After crossing TIKTO (N494006 E0565014), proceed on track 009° to NDB ABN. Cross NDB ABN at 4000. Cross TIKTO at FL120-FL150
LURUM 4F After crossing LURUM (N494127 E0564322), proceed on track 016° to NDB ABN. Cross NDB ABN at 4000 FT. Cross LURUM at FL120-FL150
BOLGO 4F After crossing BOLGO (N494300 E0563525), proceed on track 024° to NDB ABN. Cross NDB ABN at 4000 FT. Cross BOLGO at FL120-FL150
GULDO 4F After crossing GULDO (N495223 E0562651), proceed on track 039° to NDB ABN. Cross NDB ABN at 4000 FT. Cross GULDO at FL120-FL150
LARPI 4F After crossing LARPI (N501721 E0560345), proceed on track 081° to NDB ABN. Cross NDB ABN at 4000 FT. Cross LARPI at FL120-FL150